

CENTRALIZED LUBRICATION SYSTEMS

PMP300 SERIES - PNEUMATIC PANEL MOUNT SYSTEMS

These "quick install" cost effective Centralized Lubrication Systems are pre-assembled with compatible components to minimize specification, purchasing and installation time. The automatic lubrication systems operate on 25 to 125 PSIG regulated & filtered shop air and a 120V, 60Hz 1Ph electrical supply for the included dual adjustable Repeat Cycle Timer and 3-Way Solenoid Valve. The systems are sized to meet most lubrication requirements. Each feed pump is independently and externally adjustable 0 to .01 cu in (0 to .20 cu cm) by using a fine micrometer thread .02 (.57mm) pitch adjustment. A clear window is provided on each Metering Pump for visual proof of actuation.

Standard Materials:

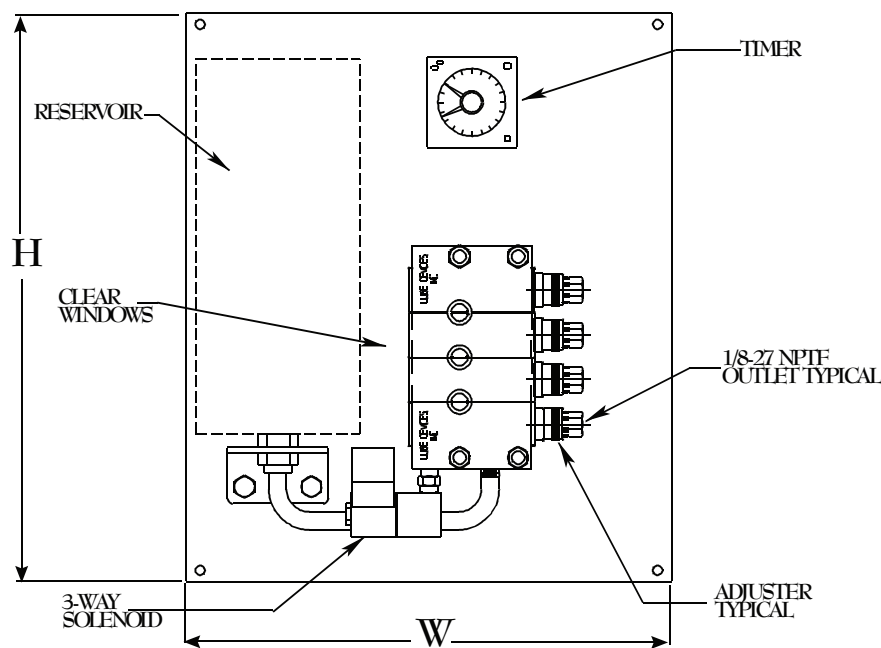
- Aluminum, Brass, Steel, Acrylic
- Buna N & Viton® seals
- Nema compliant panels

Temperature and Pressure Ratings:

- Maximum operating temperature up to 120°F (48°C)
- Minimum operating temperature 0°F (-17°C), oil
- Minimum operating temperature 32°F (0°C), grease
- Maximum output pressure up to 300 PSIG (2068 kPa)

CAUTION:

- For grease applications, the combination of higher viscosities, ambient temperatures lower than 32°F (0°C), excessively long runs of output feed lines, along with the type and use of smaller inside diameter feed lines, will have an effect on the feed rate and output capabilities of these pumps.



PMP300 Series (Oil Application)

Part No.	Reservoir Capacity	No. of Feeds	Nema Panel W x H (inches)	O. A. Depth (inches)
PMP340-04	1 quart	4	10.88 x 12.75	4.75
PMP340-06	1 quart	6		
PMP340-08	1 quart	8	10.88 x 12.75	6.00
PMP360-06	.5 gallon	6		
PMP360-08	.5 gallon	8		
PMP360-12	.5 gallon	12		

PMP300 Series (Grease Application)

Part No.	Reservoir Capacity	No. of Feeds	Nema Panel W x H (inches)	O. A. Depth (inches)
PMP330-02	75 in ³	2	10.88 x 12.75	7.00
PMP330-04		4	12.75	
PMP330-06	75 in ²	6		
PMP350-02	168 in ³	2	12.88 x 14.75	
PMP350-04		4	14.75	
PMP350-06		6		
PMP390-02	14 oz	2	8.88 x 14.75	3.75
PMP390-04	Cartridge Adapter	4		
PMP390-06		6		

**MODIFICATIONS AVAILABLE MADE TO ORDER - CONSULT OUR FACTORY
(MINIMUM ORDER MAY BE REQUIRED)**

Dimensions and specifications are subject to change without notice. Not all items are Made-To-Stock, contact us for availability.

10/24

Ph : 920-682-6877
Fx : 920-684-7210



sales@ldi-industries.com
www.ldi-industries.com